

ISSUED FOR	DATE
ISSUED FOR CONSTRUCTION	DATE
REVISIONS	
REVISION	DATE

1536 16th Street NW Washington, D.C.
 PETA FOUNDATION
 EXISTING SITE PLAN

INC PROJECT NUMBER
 20013

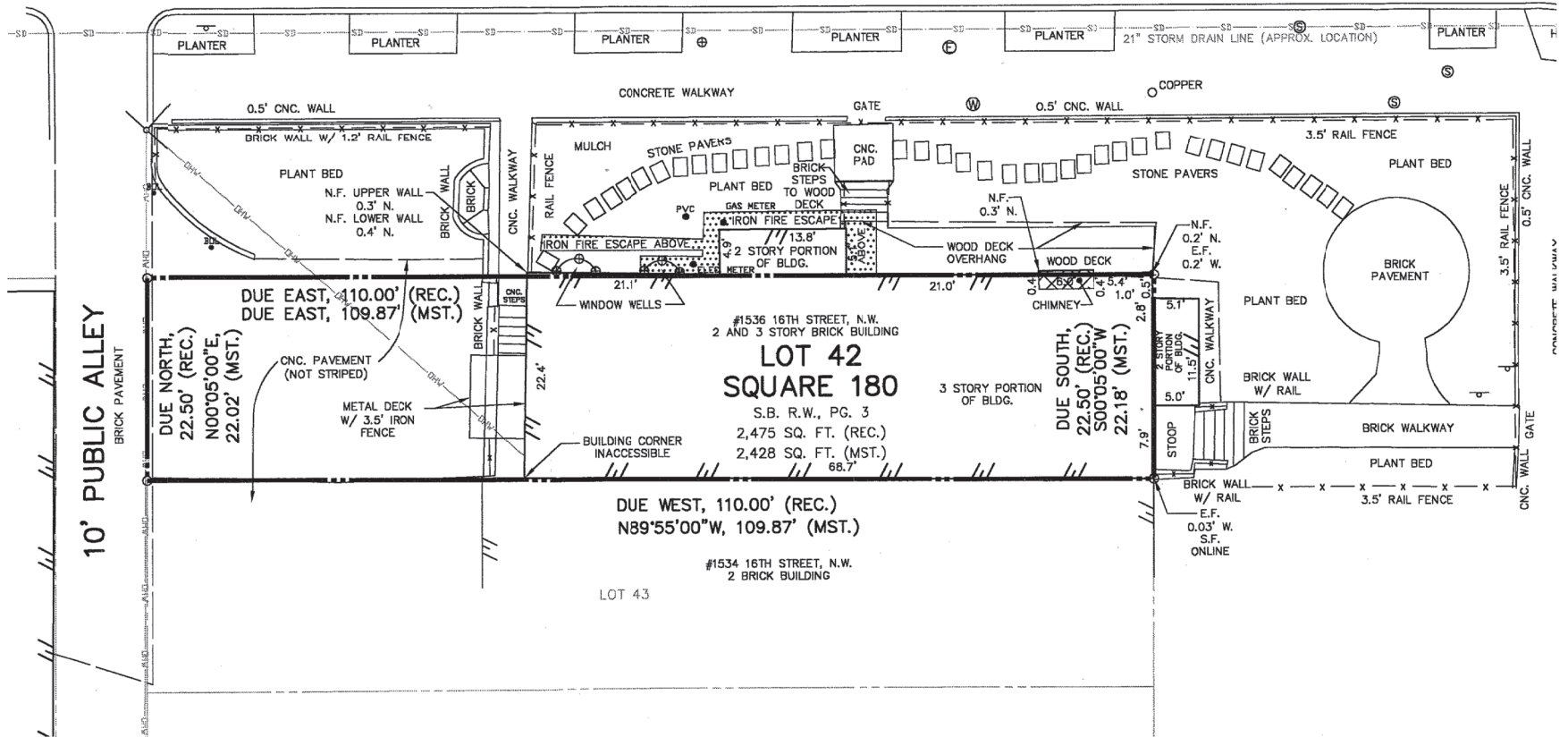
EX0

Q STREET., N.W.

90 FOOT PUBLIC STREET
 BITUMINOUS PAVEMENT

8" WATER LINE (APPROX. LOCATION)

GRANITE CURB WITH BRICK PAN



10' PUBLIC ALLEY
 BRICK PAVEMENT

DUE NORTH, 22.50' (REC.)
 DUE EAST, 110.00' (REC.)
 DUE EAST, 109.87' (MST.)
 DUE SOUTH, 22.50' (REC.)
 DUE WEST, 110.00' (REC.)
 DUE EAST, 500'05"00"W
 DUE WEST, 22.18' (MST.)

#1536 16TH STREET, N.W.
 2 AND 3 STORY BRICK BUILDING
**LOT 42
 SQUARE 180**
 S.B. R.W., PG. 3
 2,475 SQ. FT. (REC.)
 2,428 SQ. FT. (MST.)

DUE WEST, 110.00' (REC.)
 N89°55'00"W, 109.87' (MST.)

#1534 16TH STREET, N.W.
 2 BRICK BUILDING
 LOT 43

01 EXISTING SITE PLAN
 EX0 SCALE: NOT TO SCALE

Board of Zoning Adjustment
 District of Columbia
 CASE NO.20319
 EXHIBIT NO.4